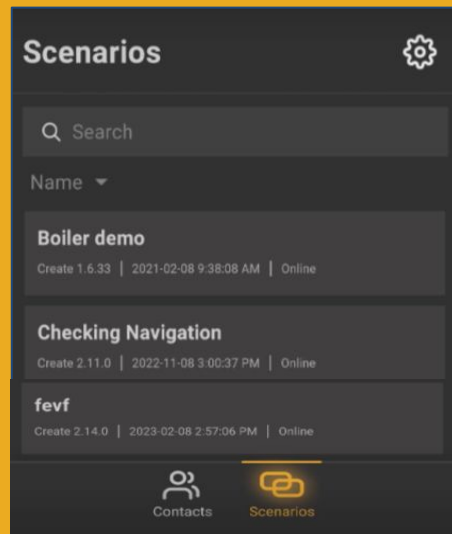
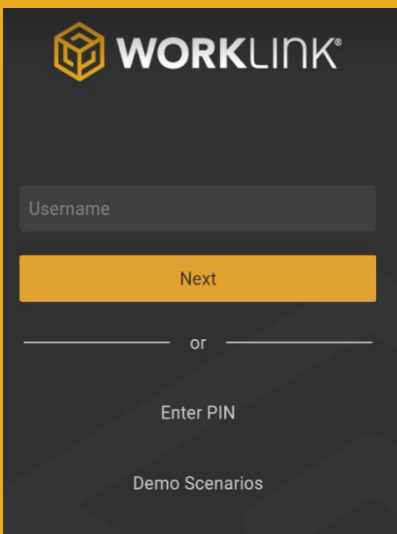


WORKLINK QUICK START USER GUIDE



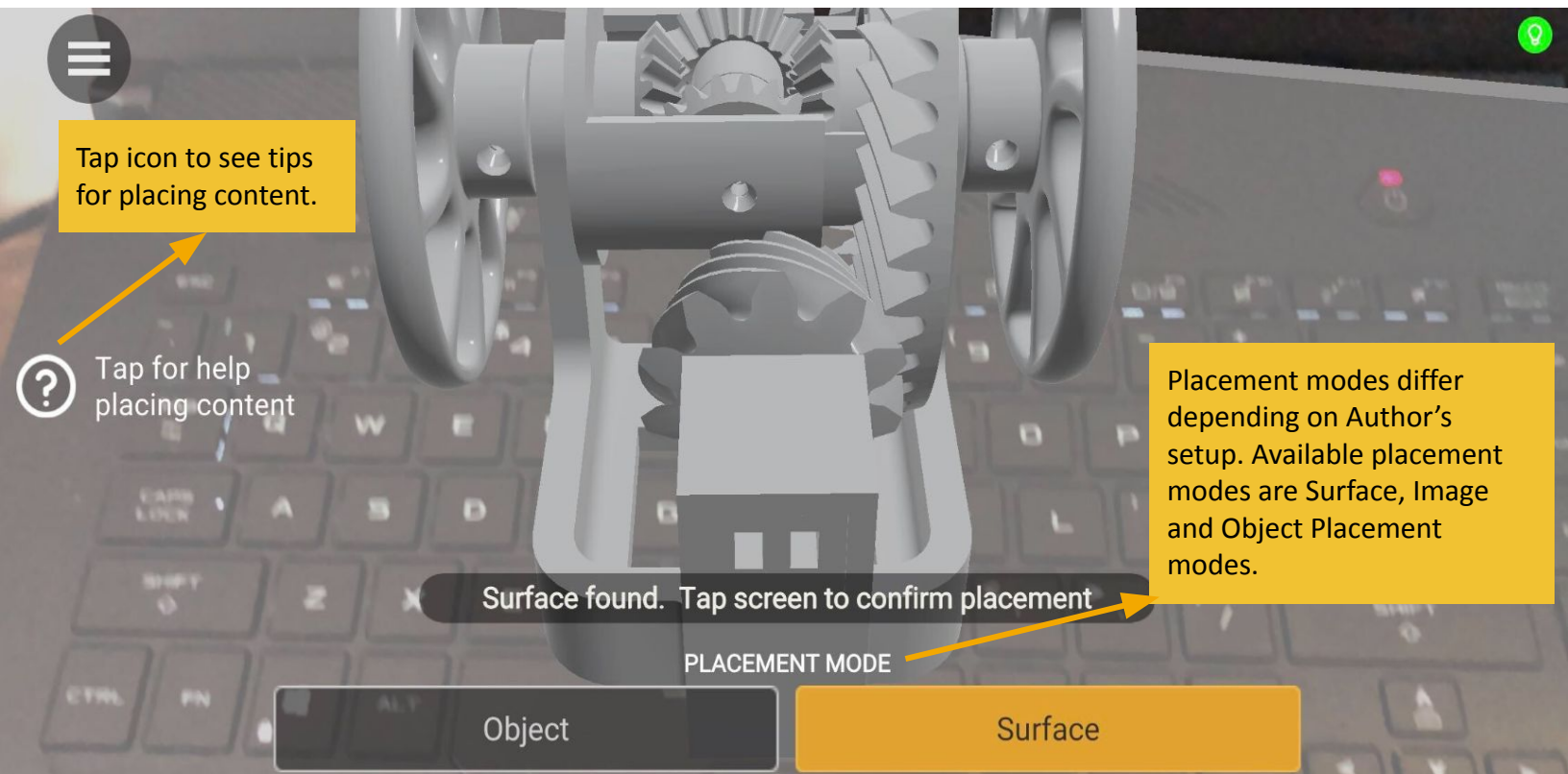
LOGIN

CHOOSE SCENARIO



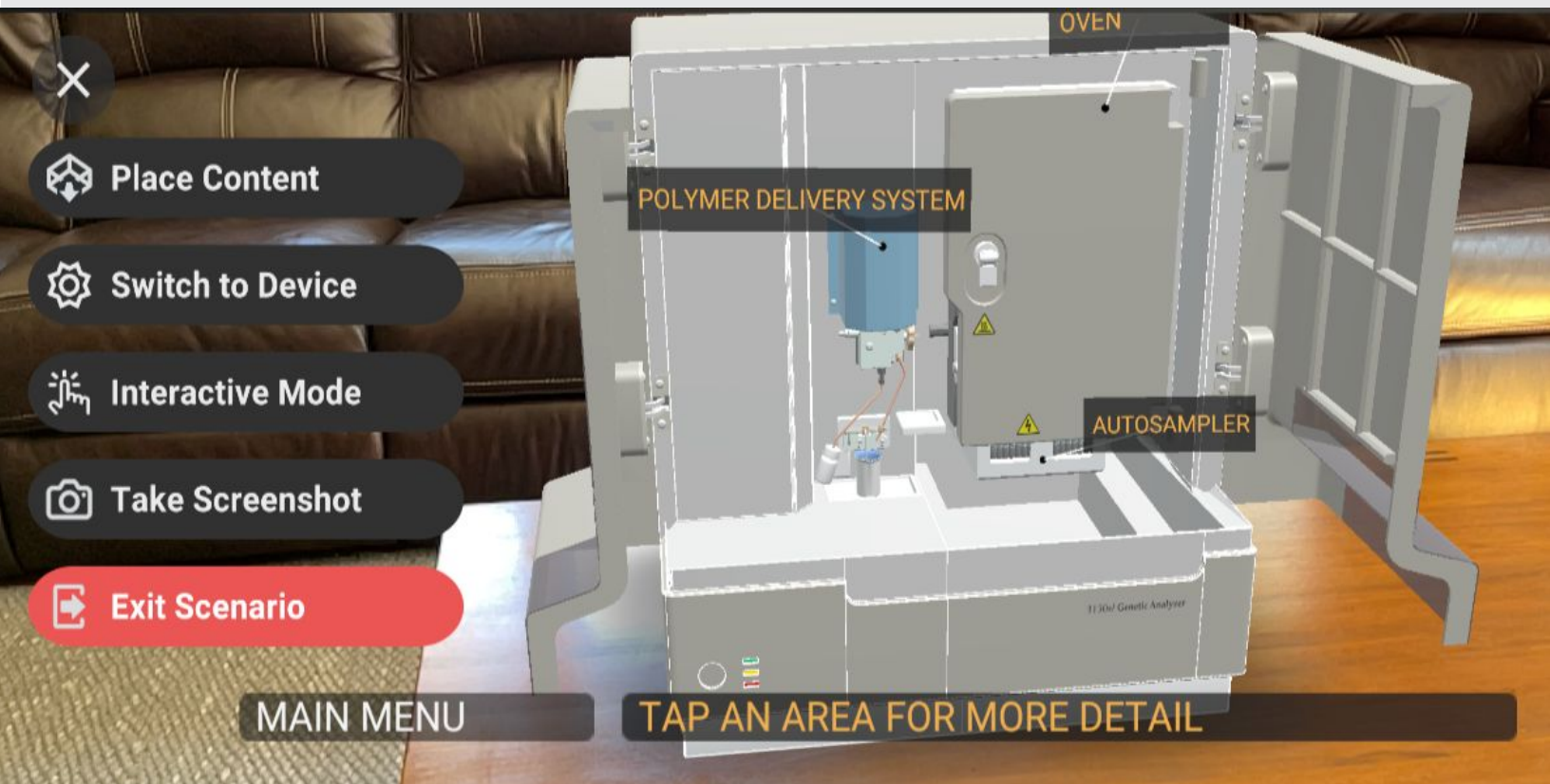
- The scenario list can be found by tapping or clicking the Scenarios icon at the bottom.
- This list shows all the work instructions available to you from your company.
- To start, tap/click the scenario name.

WORK INSTRUCTIONS VIEW - PLACE YOUR CONTENT



PLACEMENT PROCESS

- To place the content of your project in your environment, point your device camera at your desired surface/Image target or object (depending on your setup) , then tap the screen to place the content in place.
 - **Surface Placement** - This involves placing your content on a Flat Surface.
 - **Image Placement** - This involves using an Image Target for content placement by pointing your device camera at the target Image.
 - **Object Placement** - This involves aligning directly on a specific object.
- If you wish to reposition your content at any time, tap **Menu>>Place Content**. This will initiate a new placement.

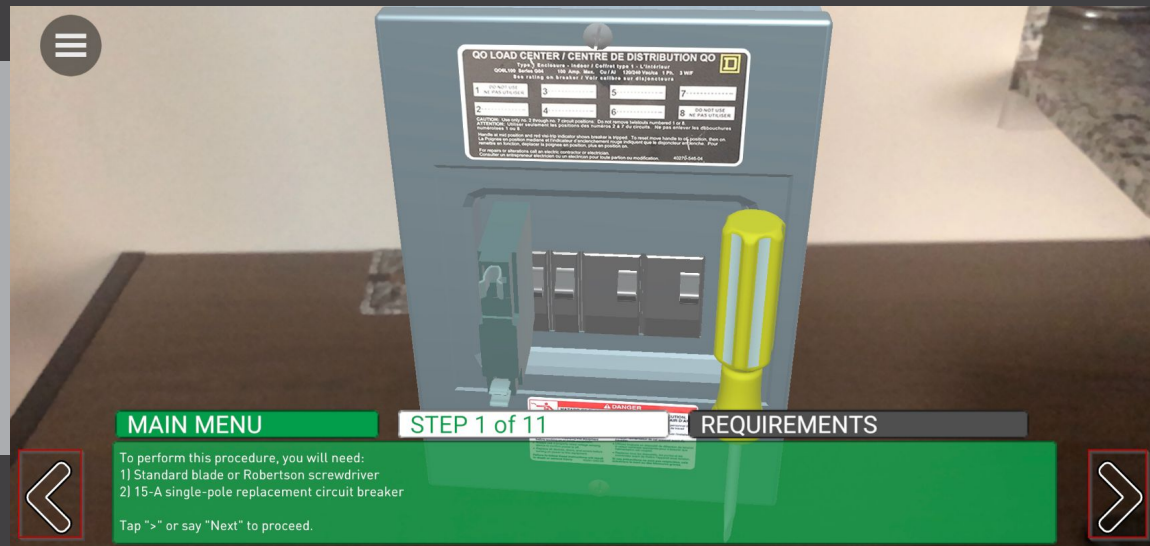


WORK INSTRUCTION PROCESS

Once the content is placed, you can begin or continue to walk through the work instruction.

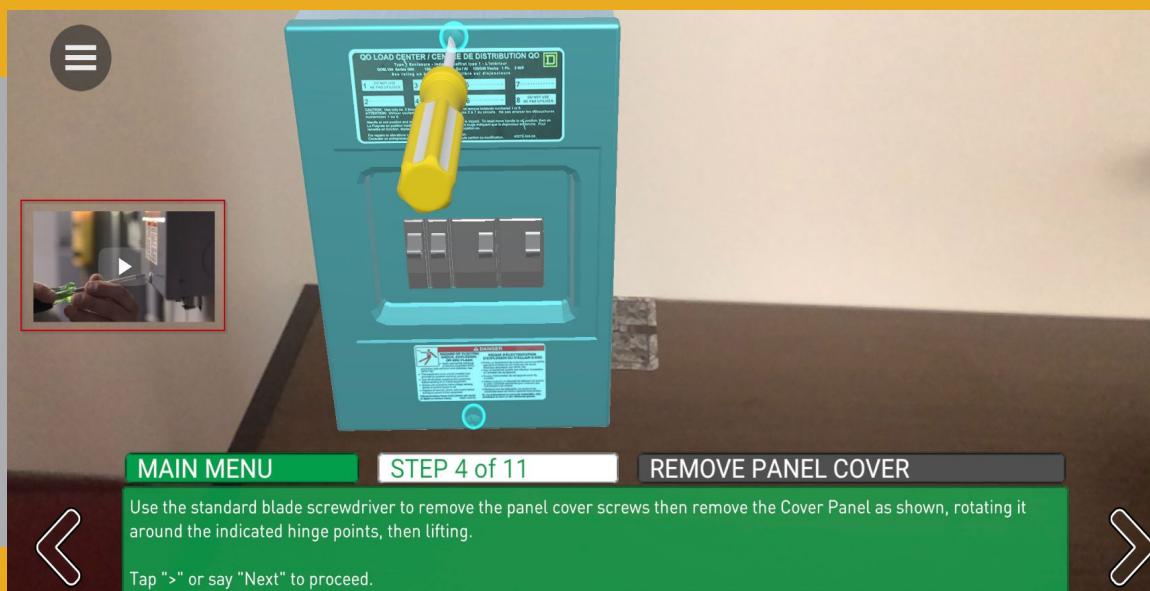
Use the Forward and Back arrows to move between consecutive steps

The instruction menu can be used to navigate to other parts of the project



Steps may provide additional resources, such as video, images, or documents.

Clicking on these will expand the content to play in full screen or open the content in the appropriate application.



WORK INSTRUCTION PROCESS

Information from your experience may be captured to the Scope CMS to verify the proper actions were completed. Two ways are shown below: checklists and taking photos.

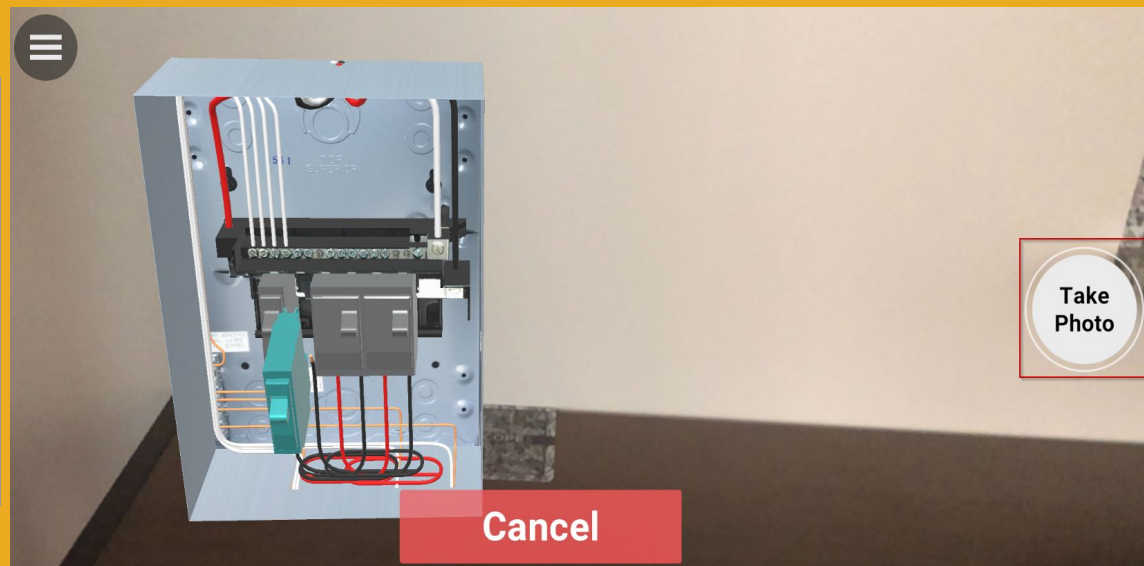
A checklist form is shown to the right

You must select the appropriate answer before proceeding

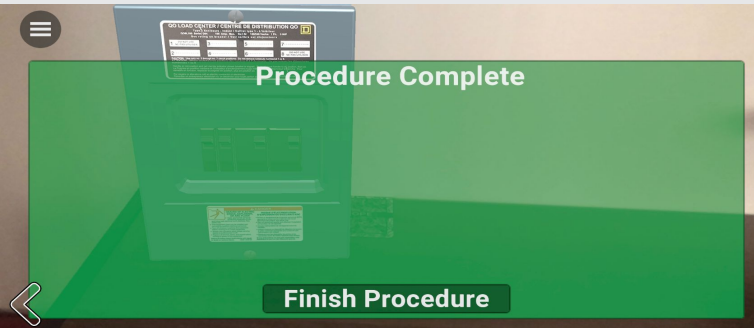


A photo request is shown to the right

Take the requested photo and WorkLink will ask you to either **Retake** or **Accept** the photo before proceeding



Once you've gone through all the steps, complete the Work Instructions by clicking **Finish Procedure**.



The **Menu** can be used to adjust project settings.



MENU DETAILS

Place Content - place or reset the position of the project (use this to reposition the project).

Switch to Standalone/Device - switch to the project not being attached to a real life object (or back to Device mode to hide portions of the AR content).

Interactive Mode - this allows a user to view instructions without the use of the device camera. Content will be displayed in a generic environment and simple gesture controls can be used to zoom, pan and rotate the content.

Active Tracking - Active tracking mode continuously looks for image targets to place your content on. Use this if frequent placement is needed in your use case.

Take Screenshot - capture a screenshot which will exist in the Scope AR CMS.

Finish Procedure - finalize and close the current work session.

Contacts - As a Remote Assistance Licensed user, this can be used to initiate a call to another available licensed user.

Exit Scenario - leave the scenario and return to the Scenario list.