

WHAT IS WORKLINK

WorkLink is an end-to-end enterprise digital work instruction platform for authoring, distributing, and viewing advanced Augmented Reality experiences.

Create

Author custom AR experiences using **WorkLink Create**.

View

Follow guided work instructions in AR in the **WorkLink App**.

Manage

Distribute and organize your AR experiences in the **WorkLink Content Management System (CMS)**.



Collaborate

Connect experts and systems using **Work Instructions & WorkLink Calling**.

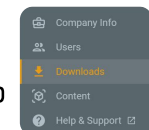
INSTALL

Online

Download from platform stores

or

Download from Scope AR CMS Downloads tab



Offline

Select your device for App Sideload Instructions

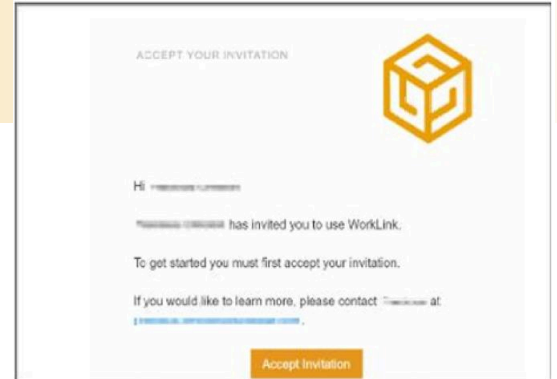


Note: Sideload is currently unavailable on iOS devices

ACCEPTING AN INVITATION

You will not be able to log in to the WorkLink App until you have accepted the invitation. Once you have been invited by your WorkLink Administrator, you will receive an email from no-reply@scopear.com inviting you to join your company on WorkLink.

Once complete, you'll be directed to getworklink.com. If your WorkLink Invitation has expired, contact your WorkLink Administrator to resend the invitation.

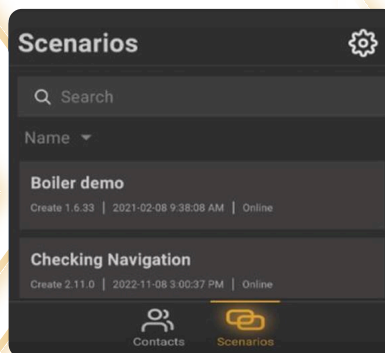


To log in:

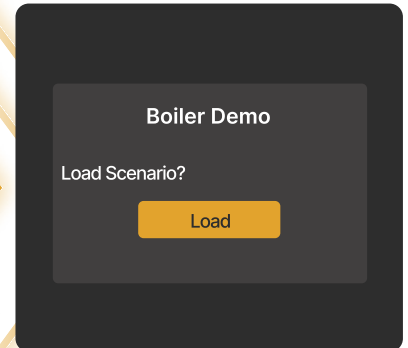
1. Click on "Accept Invitation".
2. Create a username.
3. Create a password.



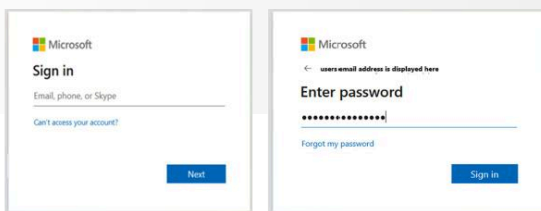
TYPE



TAP



TOUR



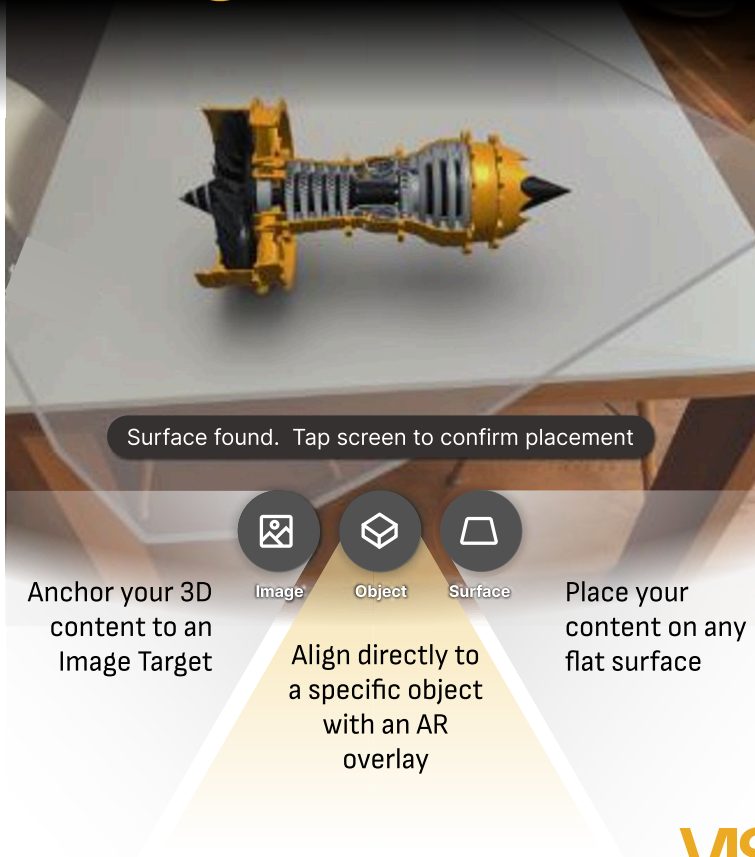
1. Enter your official email address or username (network credentials) as your username>>Continue.
2. You will be redirected to your Identity Provider Single Sign-On site.
3. Enter your username and password (if necessary).
4. You will be successfully logged in to the CMS/App.

SINGLE SIGN ON (SSO)

Once a user has been added by a WorkLink Administrator, they can access the CMS following the steps shown on the left.

Note: There are a few different configurations for SSO: Azure SSO, OAuth, or SAML. OAuth and SAML configurations require the user to sign in through a 3rd party application. Attached is an example of an SSO login using an Azure SSO configuration.

PLACEMENT



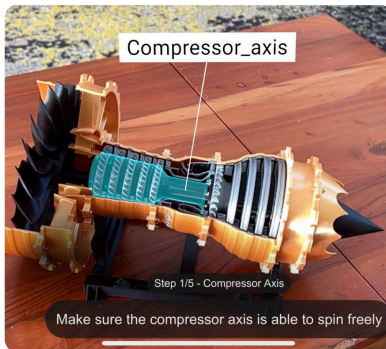
CONTENT PLACEMENT

To begin, the app will ask you to place the content of your project in your environment. Simply point your device camera at the desired surface, image target, or object (depending on your scenario), then tap the screen to confirm placement.

If you wish to reposition your content at any time, tap Menu > Place Content. This will initiate a new placement.

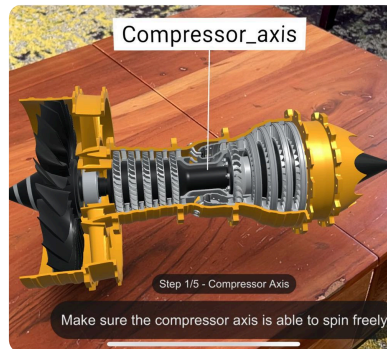
VISIBILITY MODES

AR MODE



OVERLAY MODE ON

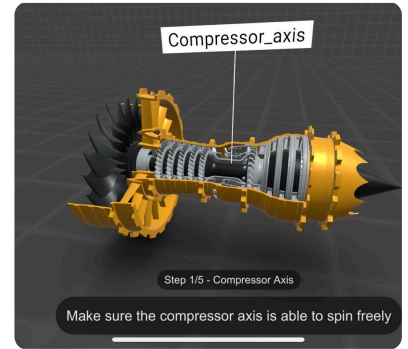
This is used for situations when you have the real equipment in front of you, so the 3D content overlays on top of the equipment.



OVERLAY MODE OFF

This is used for situations when you **do not** have access to the equipment, so the entire piece of equipment is rendered in 3D.

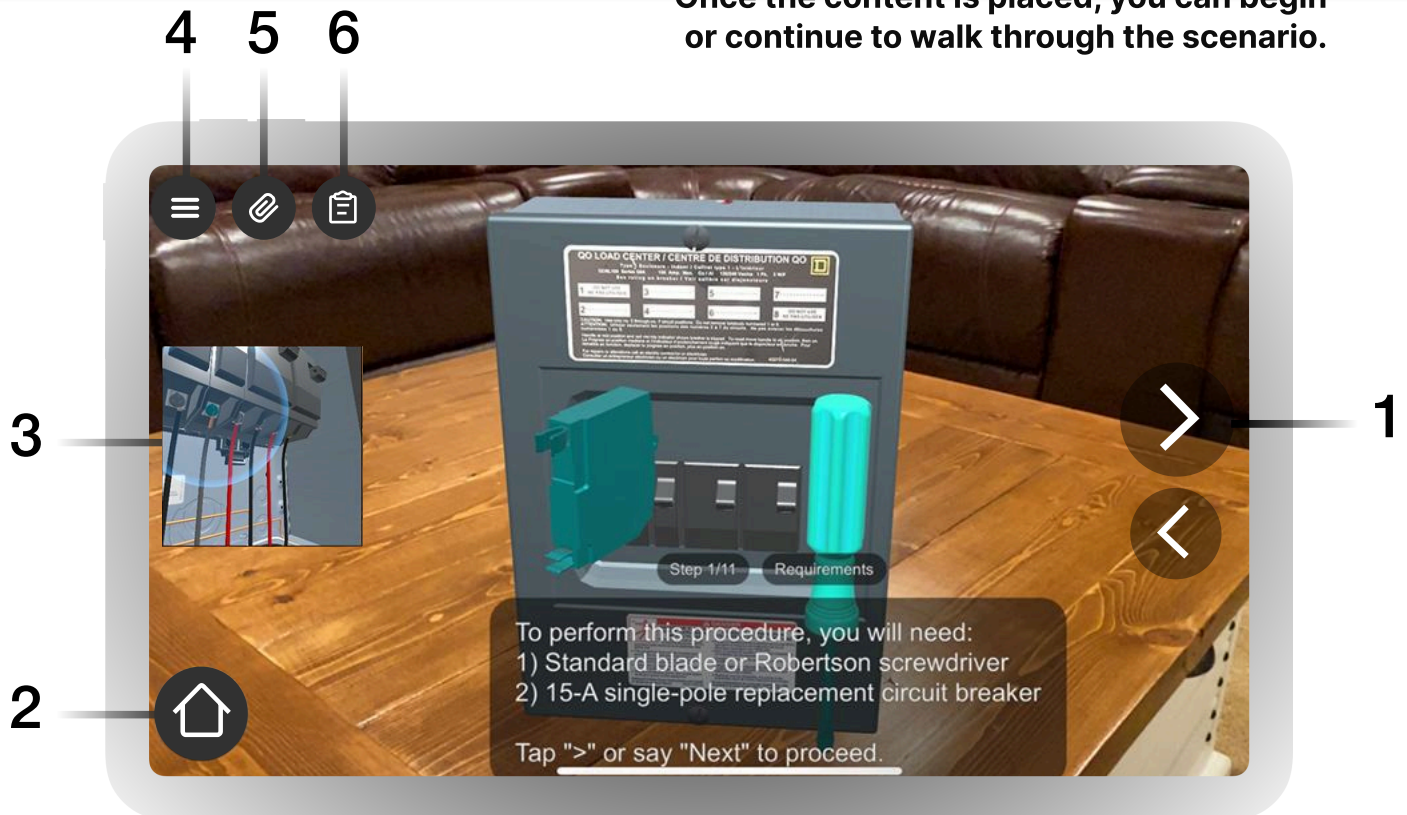
AR MODE



VIRTUAL MODE

When AR Mode is OFF, WorkLink switches to a virtual viewer. This mode does not rely on your camera or environment tracking.

Once the content is placed, you can begin or continue to walk through the scenario.



1 Navigation

Use the Forward and Back arrows to move between consecutive steps. You may be required to tap/click on highlighted part(s) of the object (hot spot) to proceed to the next step.

2 Home

Return to the main menu by selecting the Home button in the bottom left corner.

3 Inset Links

Steps may provide additional resources, such as videos, images, or documents. Clicking on these will expand the content to play in full screen or open the content in the appropriate application.

4 Scenario Menu

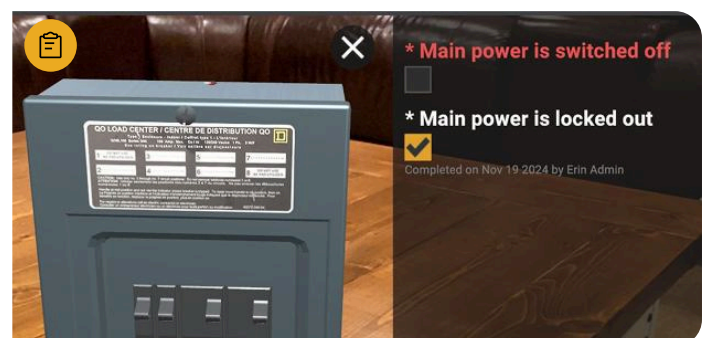
Discussed in depth on page 5.

5 Attachments

Work instructions can have attachments accessible by users. These include: Word DOCX, PDFs, HTML, xlsx, png, jpg, Mov, or mp4s.

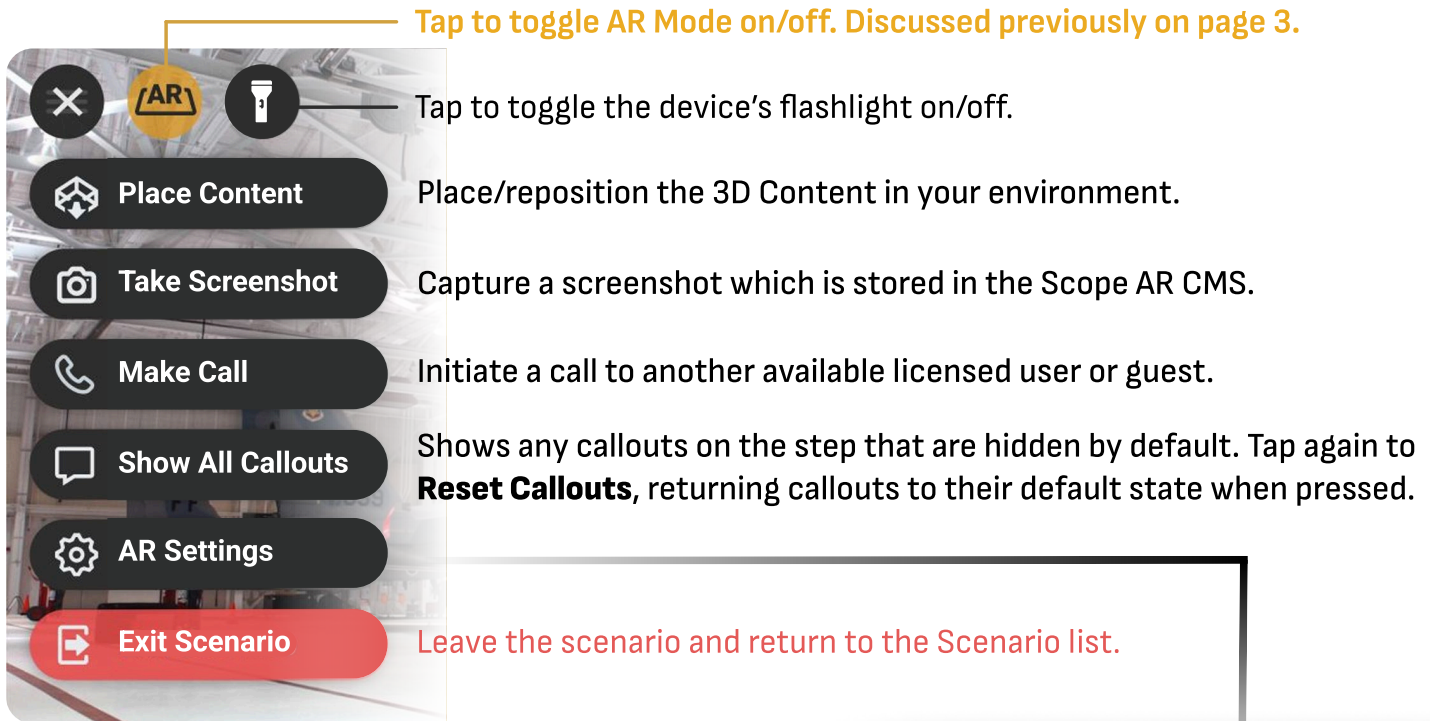
6 Forms

A form is shown below. You must select the appropriate answer before proceeding. If the form is set to passive, then the user will be able to continue without completing the form.



SCENARIO MENU

This is an overview of the Scenario Menu that is available in the WorkLink App when a user is interacting with a 3D work instruction. After a scenario is loaded, click the three-bar button in the upper-left corner of your screen.

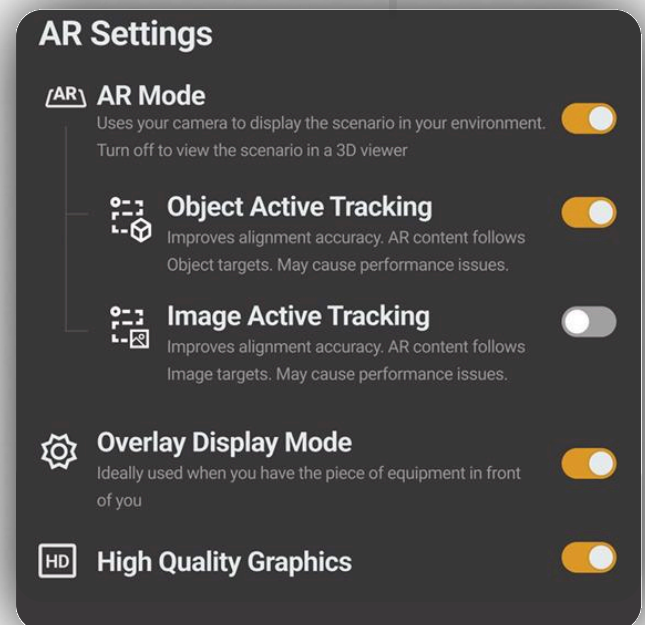


Tap to toggle between using your device's camera and the built in 3D viewer to display content.

Active Tracking allows the system to continuously follow a moving Image or Object target. This is best for situations where the tracking target is often moved or rotated from its original position during the instruction.

Overlays the content on the real-world object without obscuring it.

Improves the lighting and shader quality of the 3D content. Disable for improved performance.



The Scope AR Help Center is the core of helping our WorkLink users.



WorkLink App



WorkLink Create



WorkLink Content Management System (CMS)

Click to search our library of support articles that guide you through how to use our 3 main platforms:

To gain access to all of the features within the Scope AR Help Center, you will need to create an account (this is separate from your WorkLink login).

1. Navigate to help.scopear.com
2. Select Sign In in the top right corner
3. Select New to Scope AR? [Sign up](#)
4. Enter your full name and email and click Sign Up

Sign up to Scope AR

Please fill out this form. We will send you a welcome email to verify your email address, create a password and sign in.

Name* (required)

Email*

General Authoring / Best Practices

19 posts · 9 followers

3D Content

6 posts · 6 followers

8 posts · 7 followers

Everything Integration

Includes API, User Data, Real time Data, Systems of Record, PLM, MES, LMS, etc.

3 posts · 7 followers

Discussion on New Releases

29 posts · 9 followers

Feature Requests

Please provide the following details: 1. Affected product (WorkLink Create, WorkLink App (Remote Assist or Scenarios...

41 posts · 8 followers

Roadmap

Random

Hobbies, other technologies, entertainment, etc.

Tips & Tricks

Exciting & useful tips