

# WORKLINK QUICK START USER GUIDE (PUBLIC QR CODE)



## SCAN QR CODE

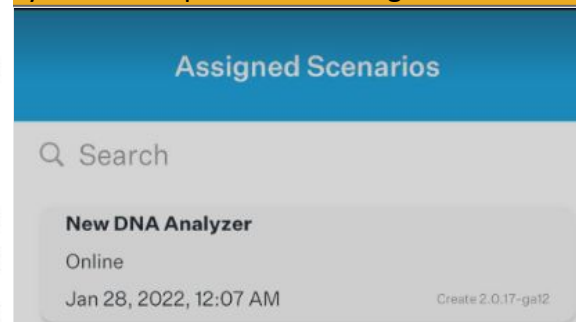
- Begin by scanning your QR Code with your device camera.
- Tap the “[getworklink.com](https://getworklink.com)” prompt. It will redirect you to the App Store to install the “**WorkLink by Scope AR**” App. Tap “**Open**” after installation.
- Approve camera, location, and audio/microphone, other permissions.
- Tap “**I Agree**” to the WorkLink Terms of Use to launch the App.



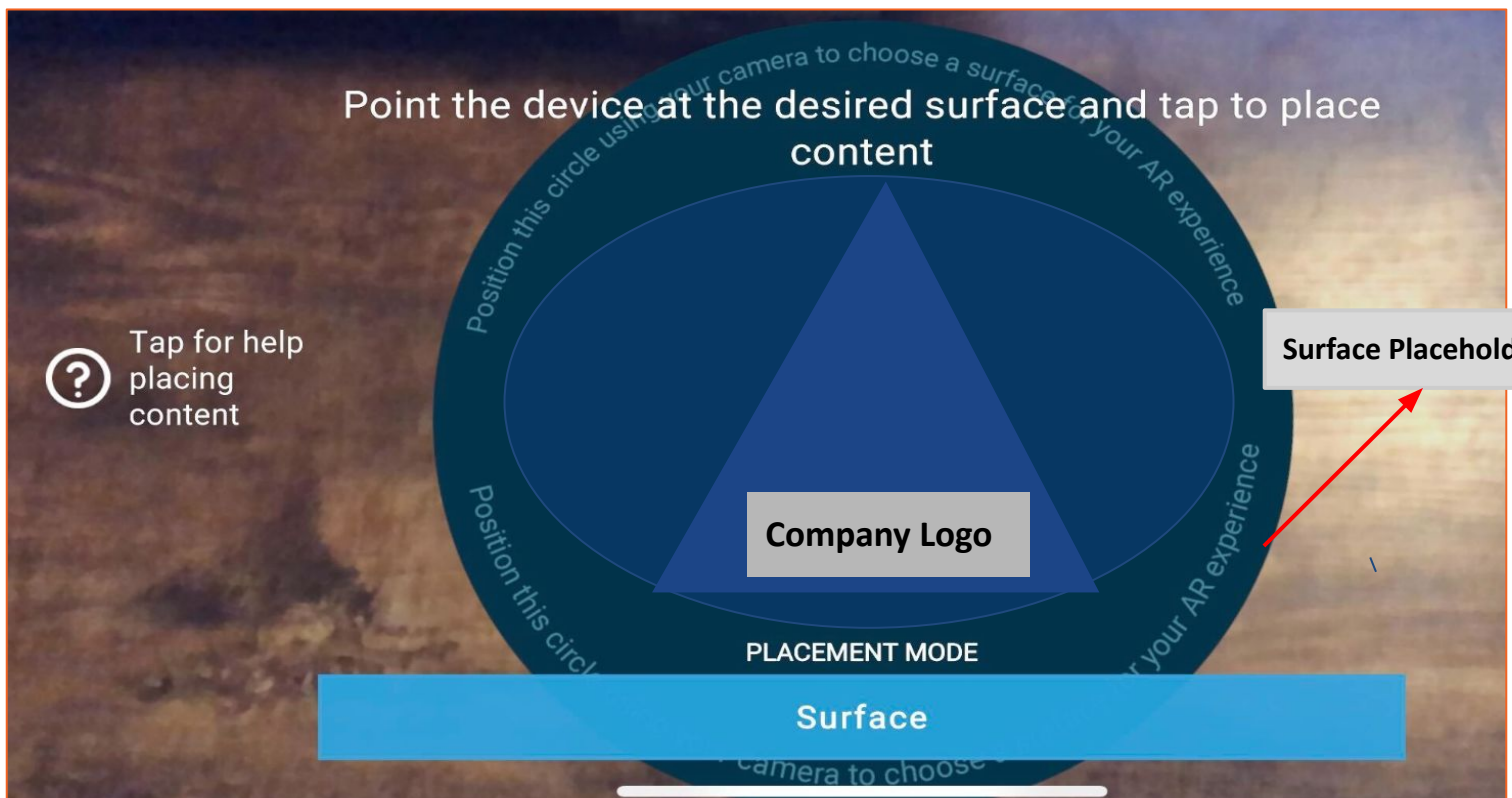
## CHOOSE SCENARIO

- You will see the Work Instruction(s) assigned to you listed under “**Assigned Scenarios**”. Tap the scenario name to load the Work Instruction.

**Note:** You will not be redirected to the App Store, if you already have the App on your device prior to scanning the QR code.

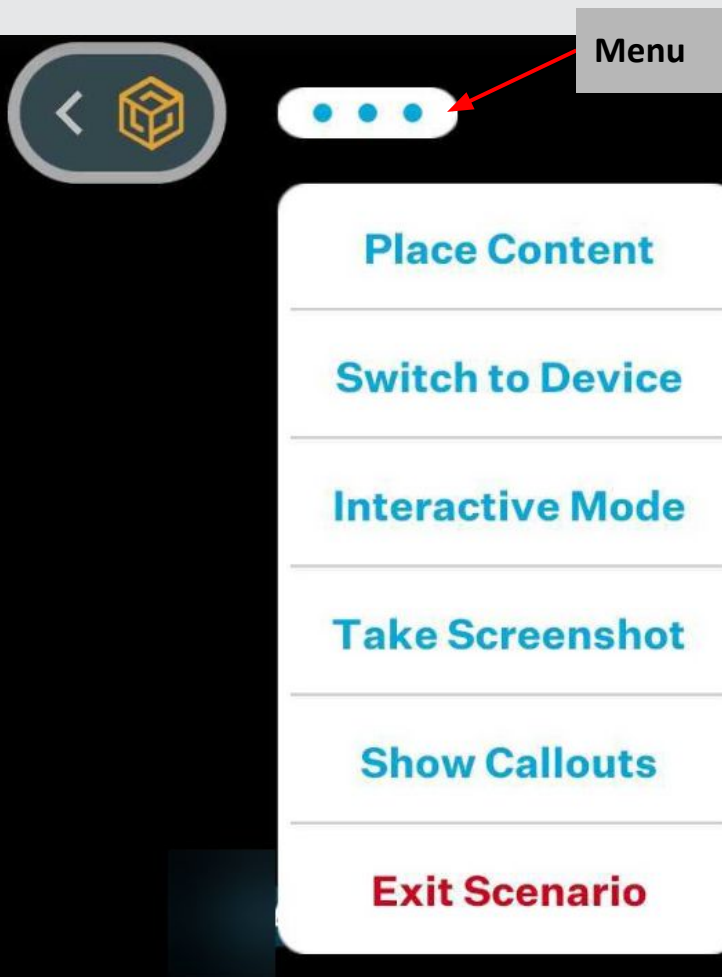


## WORK INSTRUCTIONS VIEW



## PLACEMENT PROCESS

- To place the content of your project in your environment, point your device camera at your desired surface, you will see the **Surface Placeholder**, tap the screen to place the content directly on the Placeholder.
- If you wish to reposition your content at any time, tap **Menu>>Place Content**. This will initiate a new placement.



Generally, there are three placement modes:

1. **Surface Placement** - This involves placing your content on a customized placeholder on a Flat Surface.
2. **Image Placement** (If available)- This involves using an Image Target for content placement. You will get a prompt "**Confirm Placement**" when you point your device camera at the target Image.
3. **Object Placement** (If available) - This involves aligning directly on a specific object. You will also get a prompt "**Confirm Placement**" when you point your device camera at the object.

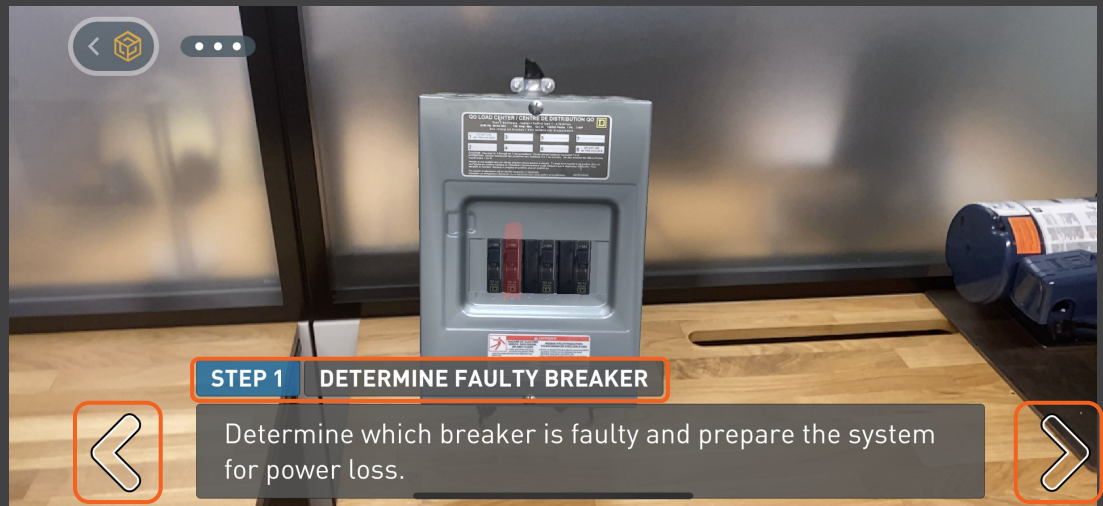
## WORK INSTRUCTION PROCESS

Once the content is placed, you can begin or continue to walk through the work instruction.

Use the Forward and Back arrows to move between consecutive steps.

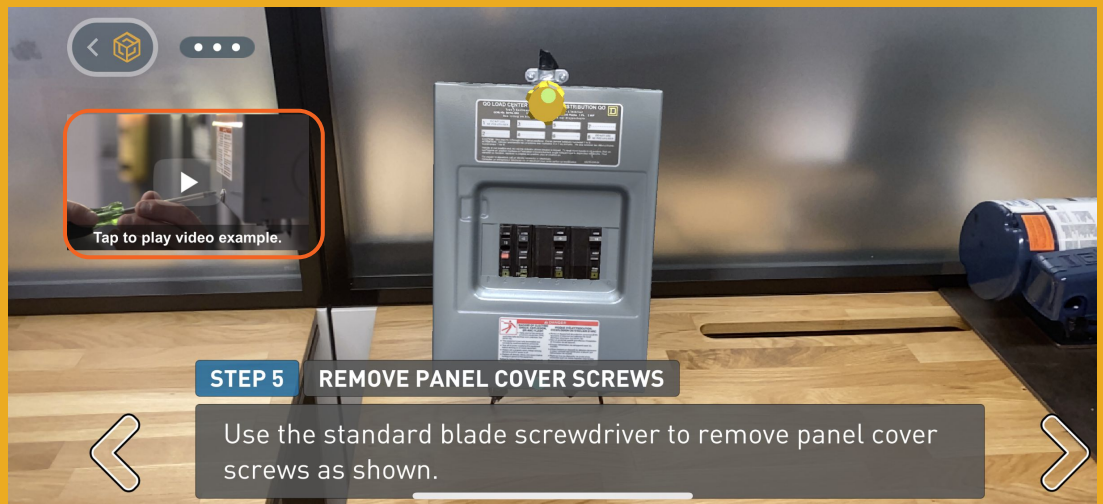
You may be required to tap/click on highlighted part(s) of the object (Hot Spot) to proceed to the next step.

It is important to follow the instructions in the menu to navigate the project.



Steps may provide additional resources, such as video, images, or documents.

Clicking on these will expand the content to play in full screen or open the content in the appropriate application.



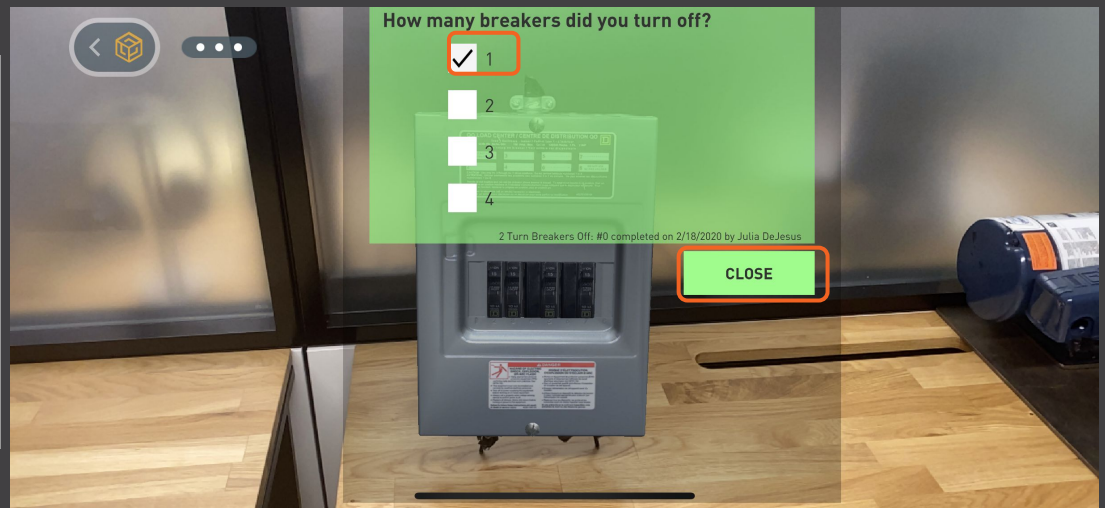


## WORK INSTRUCTION PROCESS

Information from your experience may be captured to the Scope CMS to verify the proper actions were completed. Two ways are shown below: checklists and taking photos.

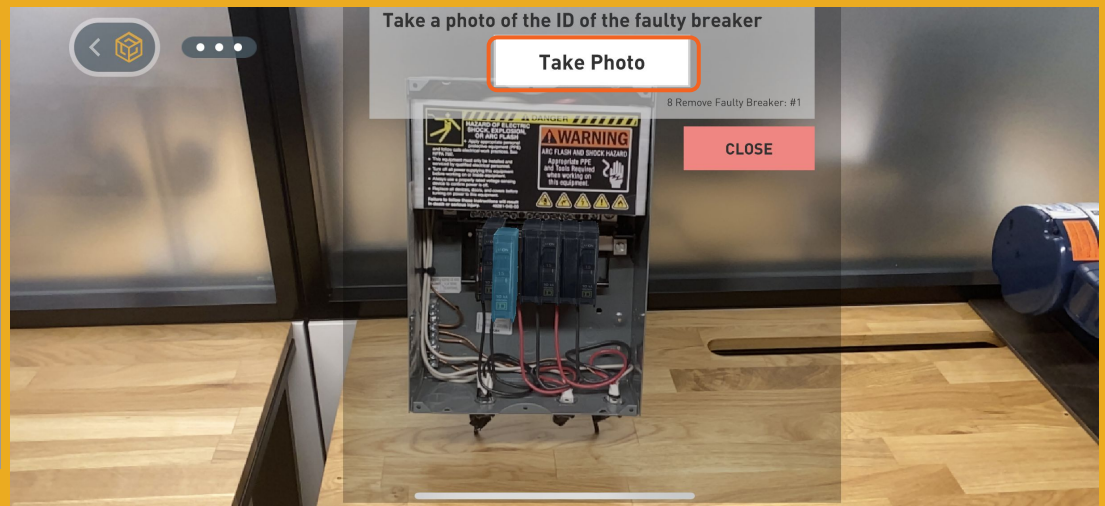
A checklist is shown to the right

You must select the appropriate answer before proceeding

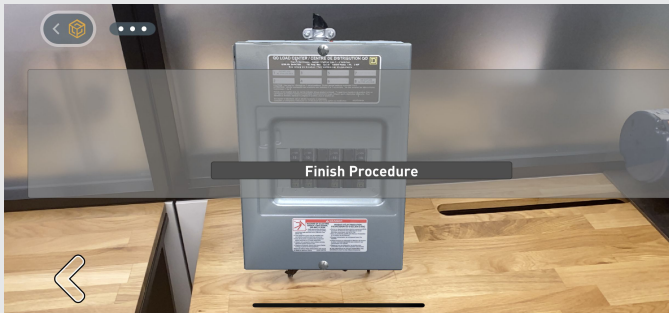


A photo request is shown to the right

Take the requested photo and WorkLink will ask you to either **Retake** or **Accept** the photo before proceeding



Once you've gone through all the steps, complete the Work Instructions by clicking **Finish Procedure**.



The **Menu** can be used to adjust project settings.



## MENU DETAILS

**Place Content** - place or reset the position of the project (use this to reposition the project).

**Switch to Standalone/Device** - switch to the project not being attached to a real life object (or back to Device mode to hide portions of the AR content).

**Interactive Mode** - this allows a user to view instructions without the use of the device camera. Content will be displayed in a generic environment and simple gesture controls can be used to zoom, pan and rotate the content.

**Active Tracking** - Active tracking mode continuously looks for image targets to place your content on. Use this if frequent placement is needed in your use case.

**Take Screenshot** - capture a screenshot which will exist in the Scope AR CMS.

**Finish Procedure** - finalize and close the current work session.

**Contacts** - As a Remote Assistance Licensed user, this can be used to initiate a call to another available licensed user.

**Exit Scenario** - leave the scenario and return to the Scenario list.